

# SHORELINES

## THE NEWSLETTER OF LONG LAKE CLOVERDALE ASSOCIATION

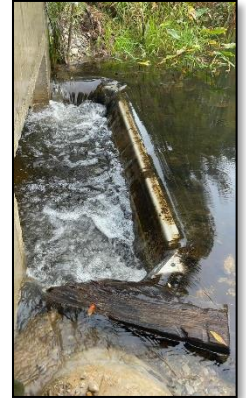
October 2023

### Presidents Corner

And just like that.....it's over! Another beautiful summer on Long Lake has come and gone with early October still providing some beautiful fall weather. The fantastic fall sunshine has made it easier to wrestle with the fact that summer is leaving us, the trees are giving us some awesome colors, but soon the predominate color will be white. No regrets here as I reflect on the great summer & the blessing of living in this amazing lake community. Just think about how much fun we had this summer 2023! Starting with the Memorial Day Block Party on Lake Front drive. What an amazing event for residents of all ages from the food, prizes, activities, and the dunk tank. Almost all donated by the residents of Lake Front Drive and attended by nearly 200 residents & guests. Concerts – How about the 5-6 live shows on the lake with top entertainment like Brena, Rusty & The Razorblades (thank you Warnke's), Dave's at Five, Burke Devlin, Silent Bark, Amp Rage, Harley Fox Acoustic's. Most all of these bands were paid for by individual residents for the benefit of the community. Again, what a great community! How about Celebration of Long Lake with LLCA apparel in abundance, an awesome poker run, Kids games at Ackers, concert, and professional fireworks. An amazing day to celebrate our lake community with your lake friends and family. Throughout the year, you likely saw the post for Pop Up Patio parties hosted by different residents on different Friday evenings throughout the summer. Let's face it – we like to celebrate & hang out together. It's all about community! The gal pal hook up was another midsummer community event (ladies only) for fun and fellowship that was again a record turnout. To wrap up our summer, Taste of Long Lake was again sold out in a matter of hours, with our eight-host providing incredible dishes & beverages. With all that going on, if you still needed to meet more fine folks on Long Lake, there was the Long Lake social center – the sand bar. With the hot summer weather, the sand bar was crowded and rock'n with many of your friends both new and old every weekend. Long Lake is a small community of just over 200 homes, but I continue to be amazed at what a great community I am blessed to live in. I appreciate the way this community is welcoming to new families and always looking to include them to the degree they wish to participate. No doubt - Life is great on Long Lake.....sunshine, sand bars, campfires, patio parties, concerts, community events.

### Fall Water Level Draw Down

We are approaching our fall water drawn period, sometime between now and the 15<sup>th</sup>. The drain commissioner will place an announcement in the Reminder showing the date that he will be removing the top 6 inch panel in the water control structure to allow the level to gradually come down to that level. Since this is our first year doing this we do not know exactly how long this will take, could be several days to a week. As soon as we are notified of the date we will post a notice on the website and our facebook page.



Doug Bamfield, Vice President

### The Loon Platform

If you have been on the water this year just north of Ackers Point you might have seen a floating platform, often occupied by multiple turtles. You might be asking, 'what is that thing'? Read on for the answer and other bits of info.

A couple years ago, LLCA board members had a discussion about the loons. We agreed that it would be awesome to have the loons consistently on our lake, and it would be wonderful if the loons would have babies on our lake. To that end, I met a local loon expert from Fair Lake and gave him a boat ride around our lake. It was his opinion that the shallow waters just north of Ackers Point would be the best location to place an artificial nesting platform to encourage the loon nesting. Now you know what 'that thing' is!

Here are a few other bits of info you might find interesting regarding loons.

- Loons will arrive typically in April. So, it is best to get the artificial platform in the water right after the ice goes out. If the loon's nest, it will begin in the second or third week of May.

## Presidents Corner continued...

Sharing all that with your lake friends makes this a special place to call home! Yes, Fall will soon be winter and not a boat will be seen, but regardless of the season, I am always thankful I live in this great community called Long Lake. The hard water season is coming soon, but we all share many great memories of summer 2023! Coming Soon – Summer 2024! Thank you to all our residents that make Long Lake a great community to live and play!



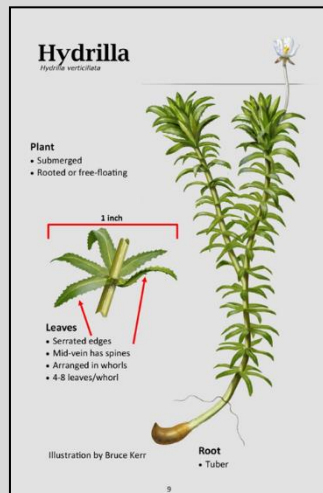
David Jackson, President  
Long Lake Cloverdale Association  
[dwjackson942@hotmail.com](mailto:dwjackson942@hotmail.com)

## New Invasive to Watch For:

A new invasive weed has been confirmed in two private ponds in Berrien Spring which could be worse than Cabomba to fight. EGLE officials reported the find on Monday, October 1<sup>st</sup>. Hydrilla is considered one of the world's most invasive aquatic plants. Any part of this plant is capable of reproducing itself and forms dense mats which push out all other plants. This plant is hard to kill, even though it does respond to herbicides because it spreads really fast.

EGLE has requested the public's help in reporting Hydrilla if it is encountered in any local waterways. Avoid confusing Hydrilla with similar native weeds. Hydrilla has pointed bright green leaves about 5/8 of an inch long with small teeth on the edge, and leaves that grow around the stem in whorls of 4 to eight leaves, but generally in 5. Hydrilla also features tiny white flowers visible in late summer to fall. It also has small white to yellowish potato-like tubers attached to the roots.

Doug Bamfield, Invasive weed management program coordinator



## The Loon Platform continued...

- The female will typically lay 1 or 2 eggs. Both the female and the male will take turns sitting on the nest. Incubation is 26 – 29 days typically, so babies are born in the second or third week of June.
- If we get loons on the nest, it is critical to keep people and boats far away (150 ft or more) from the nest.
- For 2023, small white buoys have formed a perimeter around the artificial nest platform.
- For 2024, we may have larger buoys to add clarity and encourage people to stay farther back. Nesting loons can be very skittish. If people get too close, the loon may abandon the nest and the eggs will not hatch.
- Loon pairs will often return to the same lake each year. Loon pairs will often re-use the same nest from last year vs building a new nest. Loons are territorial. Typically, for a lake the size of Long Lake, there will only be one pair of resident loons.



Sometimes other loons visit a lake to check it out and the resident loons can become defensive, especially if they have babies.

Once in a while you will see a large group of loons (earlier this year we had a group of 7 loons together) Loons are very social when they are not defending their territory or their babies.

Loons will hunt together in a group. A group of loons is called an asylum.

There are a few people around the lake who should be in an asylum... ha ha just kidding!

With a little luck, the loons will become acclimated to the location of the artificial nesting platform and decide to nest there. Loons can live 20 – 30 years and sometimes it can take 5-7 years before they pair up and begin having babies. So, the artificial loon nest may take a few years of trial and error before we get success. Stay tuned!

Bruce Young



## Pike March – Part 3

If you missed part 1 and 2 go to the LLCA Website, [long-lake.org](http://long-lake.org), and open the previous two Newsletters.

In 1971 the DNR recommended that an increase of Northern Pike be released from the pike marsh into Long Lake. The number released in 1970 was 4,827. On April 21, 1972 the marsh was stocked with 50,000 ten day old fry. On May 3430 the pike averaged 3.7 inches long and some were planted into Long Lake. On June 8 the final planting was made with a total of 982 for the year. No reason for the low number of fish planted was determined other than the personnel that manned the project were called to another site in the middle of planting. It was possible that the fingerlings ran out of food and started cannibalizing each other.

From 1973 to 1981 the average number of Pike stocked from the pike marsh into Long Lake averaged 6,545. It was calculated that about 5.3% of these would eventually be harvested by anglers. That is about 346 fish from each year's planting.

In the spring of 1981 pike were netted in Long Lake to obtain the eggs and sperm to be used at the Wolf Lake Hatchery to raise the fingerlings that would then be planted back into Long Lake from the pike marsh. In eight days, there were 311 male and 230 female pike netted. This was the typical number of pike netted each year for harvesting. The number of eggs harvested was about 3.5 million. These 3.5 million eggs resulted in about 3 to 6 thousand fingerlings planted back into Long Lake. And then finally about 3 to 4 hundred pike were caught by anglers!

After the planting of pike in 1982 a dredging operation was done to improve the marsh in hopes that it would be used for 10 more years.

From 1982 to 1986 the average number of pike stocked from the pike marsh per year was 7,758. From 1987 to 1991 the average number of pike stocked from the pike marsh was 3,056.

In 1991 the DNR determined that it was not economical to continue to operate the Long Lake Pike Marsh since raising the fry to transplant size in a fish hatchery was 50% cheaper. So from the initial idea of developing a pike marsh adjacent to Long Lake in 1963 to operating the pike marsh by the DNR until 1991 Long Lake helped develop Michigan's fishery program.

## Phosphorous Update

We have received our 2023 spring phosphorus reading and saw a great improvement from the 2022 spring levels. We had an article in our spring newsletter (available at our website) which noted that our spring level in 2022 was unusually high at 18 compared to 2021 which was 10. We asked any of you using fertilizers to make sure that you were using one that had a middle number on the bottom of the bag was 0 which indicates the amount of phosphorus in the bag. Our spring 2023 level came back at 7. Great job everyone and keep up the good work!

I would also like to thank our volunteers who do these water test collections from just after spring ice out to the end of September.

Chris Lapins: Chlorophyll collections from mid May through September.

Ron Root: Seccei Disc readings (water clarity) mid May though September.

Doug Bamfield: Phosphorus samples just after ice out and late September.

Tom and Gabby Vilella: E-Coli water samples during the summer.

Doug Bamfield, lead volunteer, MiCorp program



*Celebration Concert*



*Apparel Sale*



*Gal Pal Hookup*



Long Lake-Cloverdale Association - PO Box 133 - Cloverdale, MI 49035  
The Long Lake-Cloverdale Association is a 501(c)(3) Non-Profit Organization -  
All Rights Reserved

[www.long-lake.org](http://www.long-lake.org) - [llca.communicationsteam@gmail.com](mailto:llca.communicationsteam@gmail.com)  
[Long Lake Facebook](#) - [Long Lake Members Only FB](#)